

"I WILL HAVE POETRY IN MY LIFE. AND ADVENTURE. AND LOVE. LOVE ABOVE ALL."

Shakespeare is Love.



THE PLAY

HIGH SCHOOL EDITION

BASED ON THE SCREENPLAY BY

MARC NORMAN &

TOM STOPPARD

ADAPTED FOR THE STAGE BY

LEE HALL



13, 15 & 16 MAY 2026 | 6PM

SAINT IGNATIUS' COLLEGE

Senior Co-curricular
Drama Production

O'KELLY THEATRE

Saint Ignatius'
College Riverview

DIRECTED BY

Angy Newey
& Lara Stern

SHAKESPEARE IN LOVE

Based on the screenplay by Marc Norman & Tom Stoppard
Adapted for the stage by Lee Hall

Performance Duration:

Act I - 1 hour

Intermission - 10 minutes

Act II - 45 minutes

Welcome to the “what if” world of passionate young poet and player William Shakespeare. Lee Hall’s stage adaptation of the Academy Award®-winning 1998 film, written by Tom Stoppard and Marc Norman, imagines Shakespeare near the beginning of his career, as he struggles to write the play that would become one of the world’s most famous tragedies: *Romeo and Juliet*.

Carefully situated among known historical, biographical and theatrical details of William Shakespeare and London in 1593, the play bursts with allusions to his works. However, as with many of the Bard’s plays, *Shakespeare in Love* is a work of fiction inspired by history, yet imaginatively steeped in the truth of human experience.



DIRECTORS' NOTE



When we first began dreaming about staging a production of *Shakespeare in Love* at the College, we knew we were taking on an enormous, exciting and ambitious project. But we also knew it was the perfect match for this talented cohort of students.

At its heart, *Shakespeare in Love* celebrates the beautiful chaos of making theatre: the courage to take risks, the discipline of craft, the thrill of collaboration and the genuine joy of coming together to create something special. It's a play-within-a-play about love in all its forms: romantic love, creative passion, friendship, sacrifice and, above all, a deep love for the theatre itself.

What an extraordinary adventure it's been for us all, and a true labour of love. Over the past few months, we have watched a group of individuals become an ensemble. Together, they have stepped into this world with generosity and imagination, and in doing so, they have grown into their own as performers, learning to trust their instincts, inhabit their characters and own every moment on stage. They have laughed together, supported one another, overcome challenges, and brought to their roles a sense of play that has been an absolute joy to witness.

Throughout rehearsals, our students have discovered the beauty, wit and rhythm of Shakespeare's language. What first seemed daunting soon became exhilarating as they learned how words can bring humour, heartbreak, passion and joy vividly to life on stage. We could not be prouder of these remarkable young actors and crew members. This company has worked incredibly hard. They have shown initiative and maturity in countless ways; learning lines, refining scenes, helping with set pieces, supporting one another backstage, and committing wholeheartedly to the creative process. They conquered demanding sword fights, tackled complex staging, endured repetitive scene rehearsals, and pushed through the inevitable tiredness that comes with balancing school, assessments, sports and long days in the theatre. Most importantly, they developed patience, resilience and tolerance. Theatre teaches young people to listen, collaborate and trust one another, and this cast has embraced those lessons wholeheartedly. They learned how to bring energy and commitment to every dynamic scene, even after rehearsing it for the tenth time, and how to lift one another when energy waned. We hope the lessons learned, the memories made and the friendships forged in this theatre will endure long after the final curtain call.

A great privilege of this production has been watching our young men embrace the warmth, balance and perspective that came from having such a hardworking and talented young woman at the heart of the company. Her presence brought calm amongst the chaos, sensitivity amidst the noise, and a feminine perspective that enriched the storytelling and strengthened the spirit of the cast.

In his final play, *The Tempest*, Shakespeare wrote, "We are such stuff as dreams are made on." The dream that began months ago has grown, through dedication, imagination and the genuine joy of creating together, into a production we are so proud to share. So settle in, and let yourselves be carried away as we pay tribute to the magic, the mischief and the marvellous madness of the theatre.



Angy Newey & Lara Stern

SPECIAL THANKS

This production is a testament to the extraordinary generosity, time and expertise of so many people. We are deeply grateful to the staff, students, parents, families and friends who gave so much of themselves to help bring *Shakespeare in Love* to the O'Kelly stage.

A heartfelt thank you in particular to:

- Conrad Page, whose technical wisdom helped shape the production elements and for his work on the Wessex/Will swordfight.
- Our extraordinary costume designers, Jennifer Pocknall and Kathleen Hunt, who created costumes of such beauty and imagination that they became characters in their own right.
- Mark Anderson and Kirk Hume, who built the Elizabethan set of our dreams and turned a stage into another world entirely.
- Justine Clarke, who poured so much time, energy and theatrical expertise into our actors' performances and our set.
- The brilliant View Crew, whose skill, dedication and quiet professionalism made the production shine in every dimension.
- Nick Aisake for programming the lighting for the show with such flair.
- Our wonderful parent helpers, who generously gave their time to bring the set to life:
 - Jack Finsterer, Justine Clarke, Sarah de Flamingh, Jack de Flamingh, Sean Keating, Julia Hall,
 - Lucy Dunn and Jennifer Au-Yeung.
- Abu Hassan and David Hoang, who came to our rescue with printing, with patience and humour.
- Julie Stevens, for her calm backstage supervision throughout our production and show weeks.
- Adele Burley, whose poster design captured the spirit of the show with elegance and flair.
- Claudia McInerney, who organised catering to feed our hungry cast.
- Sally Gates, for her work on risk and compliance, including organising K9 Pro to ensure Norman's stage debut was safe for everyone.
- Anne Nesbitt for all her support with the Box Office.
- Loreto Normanhurst, for graciously allowing Felicity to join our cast and become part of the Riverview family.
- Sue Thomas, for helping Jed with his Irish accent.
- Our families and the families of the cast and crew, for their patience and unwavering support.
- Fr Rob Davoren SJ, for his encouragement and for joining us at our Dress Rehearsal.
- Mark Tannock, Cameron Anderson and Louise Arnott, whose championing of Drama at the College, means more than we can say.
- Parents and guardians, for ferrying your children to and from rehearsals, for the encouragement along the way, and for understanding so deeply the value of what it means to be part of a school production.

- Of course, to our *Shakespeare in Love* cast, thank you for your courage, humour, passion and heart. You have reminded us why theatre matters: because it brings people together, challenges us, and allows us to create something truly magical as one company.



PRODUCTION TEAM

Directors

Angy Newey & Lara Stern

Co-curricular Drama & View Crew
Co-ordinator and Theatre Manager

Conrad Page

Costume Design & Creation

Kathleen Hunt & Jenny Pocknall

Set Design & Construction

Kirk Hume & Mark Anderson

Set Dressing

Sarah de Flamingh, Jack de Flamingh,
Sean Keating, Jack Finsterer, Justine Clarke,
Julia Hall, Lucy Dunn, Jennifer Au-Yeung,
Lara Stern, Angy Newey,

Lighting Design

Nick Aisake

Backstage Supervision

Julie Stevens

Front of House

Anne Nesbitt

Photographer

Raymond Saba - *Boost Ur Biz*

Poster Design

Adele Burley

Printing

Abu Hassan & David Hoang

Audio Visual Managers

Nick Aisake & Kevin Kwan

Ushers

Benjamin Camilleri, Patrick Gardiner, James Gibson,
Bede Mercer, Yalyal Hick, Maximilian Power



SHAKESPEARE IN LOVE CAST

IN ALPHABETICAL ORDER



Lachlan Au-Yeung

Robin, Proteus,
Lady at the ball,
Lady Capulet in *Romeo & Juliet*



Xavier Byrne

Lambert, Catling, Molly,
Musician, Priest



Marcus Camilleri

Richard Burbage,
Gentleman at the ball



Luis Criola

Sam, Lady at the ball,
Juliet in *Romeo & Juliet*



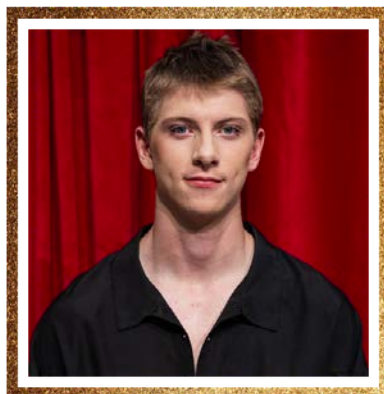
Edward Dunn

John Webster - Wednesday
Master Pope - Thursday and Friday



Jimmy de Flamingh

Kit Marlowe,
Queen Elizabeth I



Jude Feilen

Frees, Guard, Rower,
Kate, Musician



Max Finsterer

Philip Henslowe,
Lady at the ball



Danny Gordon

Lord Wessex



Felicity Hall

Viola de Lessops



Jimmy Keating

John Webster - Thursday and Friday
Master Pope - Wednesday



Jack Leahy

De Lessops, Ralph, Valentine,
Nurse in *Romeo & Juliet*



Patrick McInerney

Warbash,
Prologue in *Romeo & Juliet*



Jed Mercer

Nurse,
Tavern dancer



Harry Riordan

Peter Tooley, Waiter,
Tybalt in *Romeo & Juliet*



Luca Rogers

Ned Alleyn,
Mercutio in *Romeo & Juliet*



Norman Stern

Spot



Hamish Walter

William Shakespeare



Hugh Wentrilo

Tilney (The Lord Chamberlian),
Lady at the ball



Archie Woods

Nol, Gentleman at the ball,
Benvolio/ Sampson in *Romeo & Juliet*



Lewis Wootton

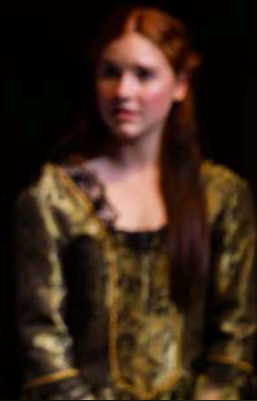
Hugh Fennyman















VIEW CREW/ CAST



Benny Dickinson
Stage Manager



Toby Dickinson
Stage Crew
Royal Courtier



Callan McInney
Stage Crew
Royal Courtier



Rhys Williams
Stage Crew
Royal Courtier



Nick Mian
Follow Spot



Max Quirk
Lighting Operation



Edward Valley
Follow Spot



Jasper Timms
Sound Operation





LOOK OUT FOR OUR NEXT CO-CURRICULAR PRODUCTION:

SHAKESPEAREALISM

THE STUDENT DIRECTED PLAY

FRIDAY, 12TH JUNE



AN ORIGINAL COMEDY BY WRITER JOSH LAWSON
DIRECTED BY YR 10 STUDENT OLIVER SCHMID & HARRY JOHNSTON